



# MUDFLAT STUDIO

Annual Report 2025



# TABLE OF CONTENTS

## 4 INTRODUCTION

- Director's Note
- About Mudflat Studio
- Mission
- Vision

## 8 STUDIO LIFE

- Course Offerings
- 2025 Enrollment
- Facility
- Faculty
- Faculty Spotlight
- Scholarships
- Workshops
- Studio Artists
- Studio Artist Spotlight
- Technical Education & Internships

## 18 OUTREACH & COMMUNITY

- Community Outreach Spotlight
- Outreach Programming
- 2025 Outreach
- Gallery
- Open Studio & Sale Event
- 2025 Events

## 22 ARTIST IN RESIDENCE

- Residency Overview
- Mudflat AIRs
- Artist of Color Residency

## 24 STAFF & BOARD

## 25 FINANCE

- Treasurer's Report

## 26 DONORS

- Thank you!

First cover: Studio Artist Angela Cunningham working on test tiles

Left: Mug by 2025-26 AIR, Felissa King

# INTRODUCTION

## DIRECTOR'S NOTE

Dear Mudflat friends,

As Mudflat celebrated our 54th year, here are a few highlights to share from 2025:

## A NEW COMMUNITY CLASSROOM

In March we opened our newly renovated classroom, with dedicated space for our community programming and short class offerings. This sunlit space features 11 pottery wheels, worktables, and class and workshop supplies. In the fall we added a roster of 4-week long wheel intro classes as an entry point for adult learners new to clay.

## RECORD BREAKING ENROLLMENT IN CLASSES, WORKSHOPS, AND COMMUNITY PROGRAMS

Pottery is SO popular! Each semester filled quickly with waitlists for classes and workshops and there was a continued interest in requests for private and corporate one-time workshops. We also continued to provide programming with our community partners, including Cambridge Health Alliance, the Somerville Public Library, and Seaport Academy.

## 2 RESIDENCY PROGRAMS

Elizabeth Pena-Alvarez (Cranston RI) was our 2025 Artist of Color Summer resident. In September we welcomed our 2025-26 Artist in Residence, Felissa King (Indianapolis IN).

## INTERNSHIP PROGRAM

Our summer ceramic technical interns were Navi Tshibambe (Tufts/SMFA) and Juno Soleil (MassArt).

## EXHIBITIONS

In addition to the 2 Open Studio/Sale events we host each year, Mudflat also celebrated ceramic work in 7 exhibitions in 2025:

"Mudflat Challenges" featured work created by students and studio artists each of 3 semesters.

Corran Shrimpton's AIR exhibition, "Heavy", showcased her sculptural work from her year-long residency.

The Mudflat Cup Show, our annual national exhibition held each spring returned for year #2. Our juror, Kyle Scott Lee, selected 250 cups created by 96 artists.

Our fall themed national exhibition, "No Apologies", juried by Corran Shrimpton, featured 44 functional and sculptural pieces created by 34 ceramic artists.

Mudflat studio artist Melanie Salisbury exhibited her politically influenced sculptural work in her show "What They Want is Not What They Get".

## FINANCIAL HEALTH

Mudflat's fundraising focus for 2025 was our Artist in Residence Fund. Through our summer and fall appeals, we met our goal of \$30,000 to increase the stipends available to these artists for materials and housing during their year-long residency at Mudflat.

In addition, Mudflat made a significant investment in our facility by paying off our mortgage in November – yay!

## CAPITAL IMPROVEMENTS

We continued to improve our classroom assets with the purchase of 11 new pottery wheels, including one wheelchair accessible pottery wheel.

## STAFF

Where would we be without our incredible staff?! Three of them celebrated significant anniversaries in 2025: Gabrielle Fougere, 25 years; Cary Atsalis, 15 years; and Kate Kuligowski, 10 years. Many thanks for your work on the Mudflat team!

The Mudflat logo captures the essence of who we are and what we do – Clay, Creativity, Community We are grateful that we can provide a vibrant and welcoming environment for the creative pursuit of clay. Thank you for the part each of you has played - as a student, as an artist, as a contributor - in our successes this past year. We look forward to your continued involvement in the Mudflat community.



Lynn Gervens  
Executive Director



Top: Mudflat Logo; Clockwise: Tuttle & Tuds, Mudflat birds; Vases by Chloe Marr-Fuller; Bisque pots waiting for pickup

# ABOUT MUDFLAT

Mudflat is a non-profit arts organization in Somerville, Massachusetts, offering classes, workshops, community programming, and events focusing on the ceramic arts. We foster an environment where students and artists can be creative, receive a rich and varied educational experience, and participate in a larger artistic community. Our goals are to share our passion for working with clay and to encourage our students to discover ways to express themselves with this responsive material, while creating functional, sculptural, and decorative work. Our strengths are that we focus on a single medium, we offer learning opportunities to all ages, and our students work in close proximity to professional studio artists. Mudflat is committed to maintaining an organizational culture of learning and respect, and a set of core values in all interactions among its students, faculty, studio artists, board, staff, funders, and neighbors. These interactions are welcoming, collaborative, collegial, supportive, and also fun!

A nonprofit, 501(c)3 organization, Mudflat is funded by tuition, studio fees, and donations from students, artists, and community members, as well as the Massachusetts Cultural Council, a state agency, and the Somerville Arts Council, a local agency supported by the Massachusetts Cultural Council. Mudflat also receives financial support from foundations, corporations, and individuals.

## MISSION

Mudflat has offered the metropolitan Boston community a unique opportunity for clay work and play since 1971. Our mission is to promote and expand appreciation of and participation in the ceramic arts through classes, workshops, outreach programming and events for students of all ages, abilities, and socioeconomic backgrounds. Mudflat also provides a mix of studio rentals, which attract and support 38 accomplished clay artists. Together, the school and studio form a dynamic community centered on clay and a shared creative process

## VISION

Founded 54 years ago, Mudflat will grow into the future by:

- » Offering a breadth and depth of high quality programs that improve the technical and creative skills of students of all ages and abilities and promote excellence in the ceramic arts.
- » Providing studio arrangements that encourage interactions and collaborations among ceramic artists.
- » Being recognized nationally for serving our local community.
- » Attracting national artists, teachers, and donors.
- » Being a respected member of the national ceramics community.



Above: Mudflat Building

# FACILITY



Main Hallway



Main Wheel Classroom



High Fire Glaze Room



Small Wheel Classroom



Handbuilding Classroom



Glaze Mix Room



Kiln Room, Gas Kilns



Kiln Room, Electric Kilns

# STUDIO LIFE

## COURSE OFFERINGS

Mudflat offers an exceptional range of courses at all levels, including wheelthrowing, handbuilding, sculpture and technical topics, during three semesters each year. Introductory courses are available every semester, along with a variety of special classes and workshops by resident instructors and guest artists. Our experienced faculty has a broad range of practical experience as well as formal training and education from ceramic arts programs at major universities.

In 2025, Mudflat's comprehensive educational program continued to serve our diverse community through structured 14-week semesters. Each term featured 27 adult classes encompassing the full spectrum of ceramic arts, from foundational wheel-throwing and handbuilding to advanced surface decoration, complemented by children's classes, teen courses, and 4-week long classes for beginning students.

The adult class curriculum was further enriched by specialized workshops, offering focused exploration of specific techniques and concepts. As a complement to the core classes, seminar classes, soda firing, private lessons, independent study options and an adult summer semester were also available.

Throughout the year, we maintained our tradition of the Mudflat Challenge exhibitions, which unite our creative community by inviting artists to contribute works responding to themed prompts, fostering artistic dialogue and experimentation.

In addition to their class time, our students have free access to our facility during open lab times which amount to more than 60 hours per week. Such extensive access is not typically included at other pottery schools and is one reason why more than 70% of our students return each semester.

Workshops expose students to a variety of artists, styles, and techniques. These range from one-day introductory wheel sessions and “date night” workshops to weekend-long seminars with nationally known ceramic artists.

Our students come from many different communities within the Greater Boston area. While the majority of our students are adults ages 24 to 60, all ages are represented, from children as young as 5 years through retirees.

## 2025 ENROLLMENT

### 4,090 PARTICIPANTS

- 1,205** Adults enrolled in classes
- 744** Adults enrolled in workshops
- 865** Adults attending presentations & Exhibitions
- 191** Children enrolled in classes
- 1,085** Adults & children participating in field trips, community programs & corporate workshops



Right: Mudflat workshop with Elaine Medina



Clockwise: Melody Eimer working on a sculpture, Opening reception of Corran Shrimpton's AIR show, New accessible wheel, NCECA Table crew

# FINANCIAL AID

An important goal for Mudflat is to keep our tuition affordable. We provide financial support to our students through four funds, which are supported by generous contributions from individuals and by revenues from our Open Studio pottery raffles. One hundred percent of contributions to any of our funds provide direct financial support to students enrolled in Mudflat classes and workshops.

## JOHN MCCOOEY FUND

Partial scholarships for any adult class are available each semester to adult students needing financial assistance through the John McCooey Fund, established in 1998 in memory of this long-time Mudflat student.

## ELEE KOPLOW FUND

In 2004 Mudflat established a scholarship fund to benefit children and their families. The Elee Koplow Scholarship Fund, in memory of this long-time Mudflat artist and teacher, provides support for children & teens.

## ELLEN SCHORR FUND

With initial donations from her family and friends, a scholarship fund was established in 2014 in memory of Mudflat founder Ellen Schorr. Scholarships are awarded to adult students who are seriously pursuing education in the ceramic arts.

## JUDITH FUCHEL-MAHLER FUND

This scholarship fund was established in 2016 by family members to honor Judith Fuchel-Mahler. Scholarships are awarded to adult students who are studying handbuilding and sculpture.



Above: finished mugs from the Missituk Clay Club students

# WORKSHOPS

## 2025 WORKSHOPS

In 2025, Mudflat hosted a variety of workshops, designed to acquaint students with a broad range of styles and techniques, along with many workshops that introduce clay to first time makers.

- » Adult introductory wheelthrowing workshops with Jesse Dougherty, Lisa Knebel & Bob Herman
- » Soda Firing with Cary Atsalis and Lynn Gervens
- » Layered Surface Decoration with Noni Armony
- » Exercising a Creative Voice on the Wheel with Chris Archer
- » Intro to Handbuilding Workshops with Kate Kuligowski (Pet Bowls, Sushi Trays)
- » Visiting Artist: Heather Hietala
- » Visiting Artist: Jabu Nala
- » Silicone Mold Making with Corran Shrimpton
- » Making Mini Houses with Amy Sullivan
- » Altering Thrown Forms with Eliane Medina
- » Mosaics with Gabrielle Fougere
- » Grief Workshops with Emily Newmann
- » Holiday Ornaments with Kate Kuligowski



Top Right: Corran Shrimpton leading a workshop; Bottom Left: Chris Archer Workshop; Right: Jabu Nala Workshop

# STUDIO ARTISTS

Thirty-seven ceramic artists work in private or semi-private studios at Mudflat, producing a wide variety of functional and sculptural work. Some studio artists are former students, others are graduates of university degree programs specializing in ceramic arts. Most are full-time ceramic artists who exhibit and sell their work locally and nationally. Many have been awarded fellowships and residencies at renowned craft centers – including fellowship awards from the Somerville Arts Council, the Massachusetts Cultural Council, and the Boston Foundation’s Brother Thomas Fund. The interactions between our artists and our students are an important asset and they offer sources of artistic and technical information, inspiration, and community.

Mudflat’s studio artist program offers studio spaces at a range of prices for 2 artist categories: Resident Artists and Associate Artists.

Resident Artists are professional clay artists who have the technical skill and experience to fire their own work in the studio kilns. Studios for Resident Artists are private individual spaces or shared studios with 1 or 2 other artists.

Associate Artists are serious clay students looking for more access, privacy, and shelf space. There are 2 large group studios of approximately 300 square feet, each shared by six artists. These studios are equipped with a shelving unit for each artist plus a central shared work table and shared pottery wheel in each studio room. Associate Artists’ work is fired by Mudflat technicians.

Both Resident Artists and Associate Artists have 24-hour studio availability, and use of other studio and classroom equipment. The monthly rent does not include clay materials, glazes, or firings, but these may be purchased through Mudflat for additional fees. A committee reviews all applications based on the following criteria: applicant’s level of professionalism, artistic quality of work, and commitment to the Mudflat community.

## 2025 STUDIO ARTISTS

Noni Armony	Elise Hauenstein
Kyriakos Atsalis	Felissa King
Susan Bernstein	Lisa Knebel
Melissa Bland	Chiyoko Lee
Lynn Cannici	June Lee
Alejandra Cuadra	Sang-Jeong Lee-Min
Angela Cunningham	Chloe Marr-Fuller
Holly Curcio	Eliane Medina
Jennifer DeAngelis	Jessica Mitchell
Debra Fleury	Trix Oakley
Gabrielle Fougère	Jane Proctor
Mariya Gazumyan	Tracy Raymond
Howard Gerstein	Elaine Reily
Lynn Gervens	Tilla Rodemann
Réme Gold	Melanie Salisbury
Lisa Graf	Corran Shrimpton
Sanem Gray	Ki Wan Sim
Katherine Hackl	Zach Shaw
Doug Hansel	Alice Templeton
	Corinna Tuckey



Right: Réme Gold posing with her mugs at the Mudflat Cup Show



## RÉME GOLD

## STUDIO ARTIST SPOTLIGHT

*"A voice in my head said, 'TRY CLAY!'"*

*I got divorced in 1972, and decided that I would make my own wooden boxes in a woodworking class like my ex husband made, and took with him.*

*After struggling in class, trying unsuccessfully to multiply fractions, and to accurately cut the wood, I heard that voice . . . 'TRY CLAY' . . .*

*I have no idea how I found my way to Mudflat Studio, Mudflat's first building in 1973, in Kendall Square, but I remember learning more in that three hour class at Mudflat than I had learned in two semesters at another pottery school!*

*Then in the mid 1970's, Mudflat moved to 25 First street, in Cambridge, and I followed them there. It was here, at Mudflat's second building, where I was offered my own studio!*

*In 1985, Mudflat bought their third building at 149 Broadway in Somerville, and I followed them there, and still had my own studio.*

*Then in 2011, Mudflat bought our most amazing building at 81 Broadway, where we are now, and where I still have my own studio.*

*During all this time, I was teaching preschool, kindergarten, taking many pottery classes, and workshops, and doing a lot of Improvisational dance, and yoga*

*My professional background is early childhood education, and I was able to combine my love for early childhood, with my love for clay, movement, and yoga, to help the children to learn through the arts*

*I retired from teaching kindergarten in the Newton Public Schools in 2005, and this allowed me to focus more on my functional pottery, and to be a part of an artist coop, The Clever Hand Gallery in Wellesley. I also sell my pottery at Mudflat Gallery in Cambridge, Kolbo Gallery in Brookline, and at the Fuller Crafts Museum Gift Shop, in Brockton.*

*My work is simple in form, a three-dimensional canvas to hold a painting.*

*I am fascinated by movement. The paintings on my pottery come from the movements and shapes created by dancers, clouds in the sky, flowers, branches, leaves, hearts, and anything else that moves or makes an interesting shape. My cat paintings are the "Essence of a Cat" and are inspired by my sister's love for cats.*

*I feel that there is an artist in everyone. I found the artist in me, and it changed my life."*

Above: Bowl & "Essence of a Cat" cup by Réme Gold

# TECHNICAL EDUCATION & INTERNSHIPS



## SUMMER INTERNSHIP

Mudflat offers opportunities throughout the year for college students who are pursuing studies in ceramics to expand their knowledge of the technical side of clay with short and long term internships. Mudflat's 2025 interns were Navi Tshibambe (SMFA) and Juno Soleil (MassArt).



## TECHNICAL EDUCATION PROGRAM

For students who have the time and desire to increase their knowledge and experience, Mudflat offers a one-year intensive technical education program. Students learn the technical side of ceramics, including clay and glaze chemistry, kiln work, and studio maintenance, while deepening their relationship with the studio. Graduates of the program are eligible to join Mudflat's kiln firing team. Our 2025 tech ed students were Katherine McKie, Jenn Lima, Teddy Cleveland, and Kyle Strom.

Left: Summer interns Carys and Henry unloading a kiln; Right: Tech-ed students, Katherine, Jenn, Teddy & Kyle.

# FACULTY

The instructors at Mudflat represent a broad spectrum of ceramic artists and educators who bring a range of approaches and sensibilities to the educational experience at Mudflat. Short bios and photos of all current faculty members can be found on our website.

## 2025 COMMUNITY FACULTY

Alejandra Cuadra	Jennifer Kwon
Christine DeGennaro	Toni Langerman
Jeanne Garrison	Eliane Medina
Sanem Gray	Deb Minns
Bob Herman	Emily Newmann
Lisa Knebel	Kris Sanders
Jill Kramer	Kristie Simonó
Kate Kuligowski	Amy Sullivan
	Christine Willis

## 2025 FACULTY

Aimée Archambault	Kate Kuligowski
Noni Armony	David LaPierre
Cary Atsalis	Kylie Marden
Keith Becker-Lazore	Eliane Medina
Jennifer DeAngelis	Maureen Mills
Jesse Dougherty	Steve Murphy
Gabrielle Fougère	Julie Peck
Lynn Gervens	Tracy Raymond
Leah Guerin	Tilla Rodemann
Doug Hansel	Katie Bosley Sabin
Mary Kenny	Corran Shrimpton
Felissa King	
Lisa Knebel	



Above: Steve Murphy's Intermediate Wheel Class

## THE MUDFLAT CUP SHOW: JURIED BY KYLE SCOTT LEE

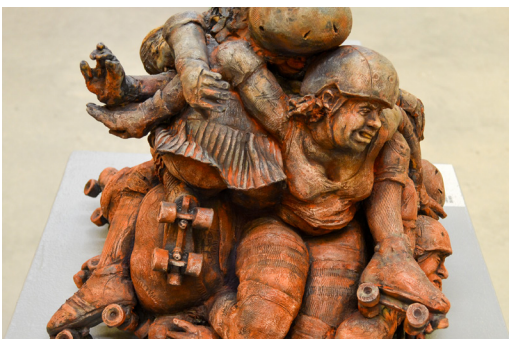
The Second Annual Mudflat Cup Show brought together an extraordinary collection of over 200 cups from ceramic artists spanning the United States and Canada. Brooklyn-based ceramic artist, collector, and instructor Kyle Scott Lee served as juror, carefully selecting works that showcased the remarkable diversity and innovation within contemporary ceramic practice.

The exhibition transformed our gallery into an immersive experience through custom-designed spiral tables that allowed visitors to journey through the full breadth of artistic interpretation. This thoughtful curation highlighted not only the technical mastery of the participating artists but also their creative vision in transforming the everyday drinking vessel into objects of beauty and contemplation. The show demonstrated Mudflat's commitment to celebrating functional ceramics while fostering connections within the broader ceramic community



Clockwise from bottom left: Ian Basset, Dustin Low, Heather Lepp, David Orser, Gretchen Quinn, Justin Leavitt, Nathan Bray, Benjamin Buchenot;  
Middle: Display of cups

# MUDFLAT JURIED EXHIBITIONS



## NO APOLOGIES: JURIED BY CORRAN SHRIMPTON

Mudflat's provocative juried exhibition "No Apologies" showcased the bold, uncompromising work of 33 clay artists from across the nation, curated by juror Corran Shrimpton. This powerful exhibition celebrated womxn and femme artists who refuse to conform to traditional expectations of quiet restraint or delicate femininity.

The selected works embodied a fierce aesthetic rebellion, featuring pieces that commanded attention through vibrant color, dramatic texture, and bold sculptural presence. These artists embraced the radical act of taking up space—creating work that is intentionally loud, messy, and defiant in a cultural landscape that often rewards compliance and subtlety. This exhibition reinforced Mudflat's commitment to platforming diverse voices and challenging artistic boundaries.

Top Left: No Apologies Exhibition; Top right: Sculpture by Chrystal O'Boyle; Bottom left: Sculpture by Sarah Peters; Bottom right: Mugs by Rebecca Stevens

# OUTREACH & COMMUNITY

At the heart of Mudflat's mission is a deep passion for bringing the transformative power of clay to everyone in our community. Through workshops, classes, and community events, we create welcoming spaces where people can discover the joy of working with clay, regardless of their experience level. Our dedication to making ceramics accessible means meeting people where they are – whether that's through outreach programs, public presentations, or exhibitions that bring neighbors together through the shared joy of ceramics.



## COMMUNITY SPOTLIGHT

### JILL KRAMER

*"I have been a member of the Mudflat community for six years, although I have been making pottery since high school. I spent many years making wheel thrown pottery, although most of my work these days is handbuilt. Throughout my 40 year career as a special education teacher, I have always had a deep passion for creative learning. In my retirement I wanted to combine my love for teaching with my love for ceramics.*

*Throughout my career, and now as a community outreach teacher, I have been and am committed to making art accessible, inclusive, and meaningful for learners of all ages and abilities. I love teaching ceramics to both children and adults in the community, with varying abilities, fostering confidence, self-expression, and connection through hands-on clay work. I believe that teaching should be focused on the students, and the clay is simply the vehicle in which confidence grows."*

Left: Group from Mystic Learning Center with instructor Jill Kramer; Right: Clay participant at Mudflat tent during Carnival Festival

# OUTREACH PROGRAMMING

Mudflat has a long history of special outreach programs and events that demonstrate our ongoing commitment to enhance and encourage the vital and creative development of ceramic arts in the greater Boston area.

## EDUCATIONAL PROGRAMS AT MUDFLAT

As a complement to our core program of classes and workshops, Mudflat offers opportunities for school, youth, and corporate groups to visit our facility for a hands-on experience working with clay. These classes and field trip visits are led by Mudflat faculty and incorporate age-appropriate clay working techniques in handbuilding and wheelthrowing skills. Participants create and decorate clay pieces; all work is fired in Mudflat kilns to produce a finished product. Typical programs include summer programs with local youth groups, one-time field trips for Girl Scouts working towards a pottery merit badge, and corporate team-building workshops.

## EDUCATIONAL OFF-SITE PROGRAMS

Mudflat's instructors travel to local organizations and programs to bring clay-making to kids, teens, families, and seniors. These programs focus on handbuilding skills, using slabs and coils to create functional and sculptural pieces that are decorated with texture and underglaze colors. All work is brought back to Mudflat for firing in our kilns, and returned to the participants. Typical programs include one-time workshops at local preschools for 3-5 year olds, ongoing weekly afterschool classes at elementary schools, and monthly programs at senior centers.

## FUNDING

To ensure that Mudflat can provide opportunities to groups with limited financial resources and provide a valuable artistic experience for all ages, many of these programs are supported by contributions from individuals and foundations to Mudflat's Community Outreach Program Fund, and proceeds from Mudflat fundraising events. We also receive financial support for specific programs from the Somerville Arts Council, the Somerville School Department, and the Somerville Council on Aging.

## 2025 OUTREACH

- » Cambridge Health Alliance
- » East Somerville Public Library
- » Northeast Woodland Charter School
- » Seaport Academy
- » HomeBase
- » Riverside Community Care
- » Missituk School Clay Club
- » Dandelion Montessori



**MUDFLAT IS SUPPORTED IN PART BY THE SOMERVILLE ARTS COUNCIL,  
AS WELL AS THE MASSACHUSETTS CULTURAL COUNCIL**



# GALLERY

Since 1998, Mudflat Gallery has been a retail presence in Cambridge's Porter Square, offering a dedicated space to showcase the exceptional work of Mudflat's artists, faculty, and students. The 350-square-foot gallery occupies a distinctive glass arcade setting alongside Sign of the Dove, another established craft cooperative. Expanding beyond its physical location, Mudflat's online shop extends the gallery's reach, connecting ceramic artists with collectors and pottery enthusiasts across the country, making handcrafted ceramics accessible to a broader audience.



# MUDFLAT OPEN STUDIO & SALE EVENTS

Mudflat's biannual Open Studio and Sales events, held each May and December, welcome the public into our creative space. These popular events showcase an extraordinary range of ceramic work, from functional pottery to sculptural pieces, created by up to 97 artists in our community. Beyond their role as exhibitions, these events significantly contribute to Mudflat's various initiatives, raising \$7,776 for our financial aid funds, and \$9,682 for the Mudflat Fund to support equipment purchases, our 2025 focus.



Top: Platter by Lynn Cannici; Bottom Left: Band Bean Supper played at Mudflat sale opening; Bottom right: House sculptures by Amy Sullivan

# 2025 EVENTS

## EXHIBITIONS:

- » *What They Want is Not What They Get*, Melanie Salisbury
- » Artist in Residence Exhibition: *Heavy*, Corran Shrimpton
- » Mudflat Challenge Exhibition: *It's the Little Things: Miniature show*
- » Mudflat Challenge Exhibition: *Take Flight*
- » Mudflat Challenge Exhibition: *Family Recipe Vessels*
- » National Juried Exhibition: *The Mudflat Cup Show*, Kyle Scott Lee, juror
- » National Juried Exhibition: *No Apologies*, Corran Shrimpton, juror

## FUNDRAISERS:

- » Mudflat T-shirt and Hoodie Fundraiser
- » Used Tool & Book Sale

## COMMUNITY ENGAGEMENT EVENTS & TALKS:

- » Tuttle Talk: Heather Hietala
- » Film Screening: *A Father's Kaddish*
- » Tuttle Talk: Elizabeth Pena-Alvarez
- » Tuttle Talk: Felissa King, 2025-2026 AIR
- » Tuttle Talk: Gabrielle Fougere
- » Tuttle Talk: Forrest Sincoff-Gard
- » Studio Talk student meet-ups, led by Merrill Frank & Bob Herman



Left: Sculpture by Corran Shrimpton; Top : Sculpture by Melanie Salisbury; Bottom right: Group attending Gabrielle Fougere's Tuttle Talk

# YEAR LONG ARTIST RESIDENCY

## YEAR LONG RESIDENCY OVERVIEW

In 1996 Mudflat began offering a one-year residency position to clay artists. This highly competitive program provides a private studio space at no cost with access to Mudflat's facility and opportunities for the resident to teach and sell their work. The position provides the artist with a stipend for materials, and, a monthly housing stipend. At the end of the residency year, Mudflat hosts a solo exhibition for the artist to showcase their work. While pursuing their artwork in a creatively and financially supportive environment, these artists also make significant contributions to Mudflat as teachers and mentors.



## 2025-2026 RESIDENT FELISSA KING

Felissa King received a BFA in sculpture from Taylor University. Post college, she expanded her ceramic practice at community studios through membership prior to co-founding Yellow Door Ceramics Studio, a community studio in Indianapolis, Indiana, in 2021. Alongside teaching and studio ownership, Felissa is a working artist whose work explores the beauty and patterns of a vibrant garden through detailed painted and slip-trailed underglaze decoration on functional stoneware pieces.

Above: Work by Felissa King

## YEAR-LONG RESIDENTS BY YEAR

2025-2026	Felissa King
2024-2025	Corran Shrimpton
2023-2024	Madeleine Hartley
2022-2023	Nicole McLaughlin
2021-2022	Katie Bosley Sabin
2020-2021	G.V. Kelley
2019-2020	Clive Sithole
2018-2019	James Lee Webb
2017-2018	Katie Fee
2016-2017	Martin McDermott
2015-2016	Mike Roche
2014-2015	Rachel Eng
2013-2014	Kyla Toomey
2012-2013	Dan Molyneux
2011-2012	Holly Curcio
2010-2011	Lisa Graf
2009-2010	Debra Fleury
2008-2009	Deborah Schwartzkopf
2007-2008	Cathy Lu
2006-2007	Nicole Peters
2005-2006	Ryan Takaba
2004-2005	Angela Cunningham
2003-2004	Monica Ripley
2002-2003	Gabriel Penfield
2001-2002	Meghan Sullivan
2000-2001	Ruchika Madan
1999-2000	Karsten Kunert
1998-1999	Randy Fein
1996-1997	David Orser

# SUMMER ARTIST OF COLOR RESIDENCY

## ARTIST OF COLOR RESIDENCY OVERVIEW

The Artist of Color Residency program offers a flexible, self-directed experience shaped by each resident's unique professional goals. Residents have the freedom to focus their time in various ways, whether developing teaching skills, creating work for a solo exhibition, or producing a new body of work. Mudflat actively collaborates with each resident to create a customized experience that advances their artistic career, including facilitating meaningful mentorship connections within their areas of interest. This tailored approach ensures that each residency becomes a transformative opportunity for artistic growth and professional development.



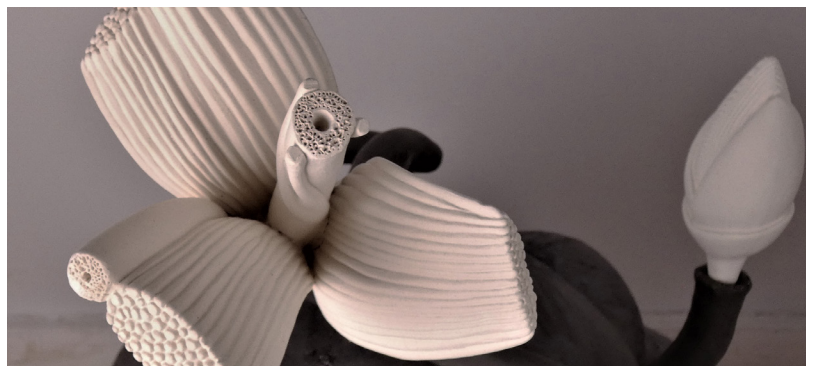
## ELIZABETH PEÑA-ALVAREZ

2025 RESIDENT

Based in Cranston, Rhode Island, Elizabeth Peña-Alvarez is a sculptor working primarily in clay. Born in Miami, Florida, of Ecuadorian heritage, the city's lush, diverse vegetation left a lasting impression that continues to inform her studio practice. Her work explores post-traumatic growth through the interplay of opposing forces—light and darkness, life and loss, growth and destruction—rooted in the belief that profound challenges can lead to transformation. Peña-Alvarez holds MFAs in Ceramics from the Rhode Island School of Design and in Artisanry from the University of Massachusetts Dartmouth. Her work is exhibited nationally, and she has held residencies at the Archie Bray Foundation, Penland School of Craft, Watershed Center for the Ceramic Arts, and the Hambridge Center.

## ARTIST OF COLOR SUMMER RESIDENTS BY YEAR

2025	Elizabeth Peña-Alvarez
2024	Robyn Gibson
2023	Seola Lee
2023	Marcus Rothering



Top: Sculpture by Elizabeth Peña-Alvarez ; Bottom: Detail shot of sculpture by Elizabeth Peña-Alvarez

# STAFF & BOARD

## 2025 STAFF

Lynn Gervens, Executive Director  
Kyriakos Atsalis, Technical Director (*15th Anniversary!*)  
Jennifer DeAngelis, Technical Director  
Kate Kuligowski, Marketing & Communications  
Director (*10th Anniversary!*)  
Gabrielle Fougère, Administrative Assistant/  
Community Coordinator (*25th Anniversary!*)  
Kristie Simonó, Registration & Student Support  
Coordinator  
Jesse Dougherty, Technical Assistant  
Bill Russell, Facility Manager

## 2025 GALLERY STAFF

Elizabeth Baldwin  
Elizabeth Connelly  
Doug Hansel  
Lisa Knebel  
Toni Langerman  
Susan McCabe  
Jeylyn Simono  
Pamela Wickham

## 2025 MONITORS

Gail Barry  
Lisa Kennedy  
Paul Salinas  
Maria Santos  
Stephanie Schorow  
Marsha Turin  
Sheryl Zelten

## 2025 BOARD OF DIRECTORS

Michael Scanlon, President  
Elizabeth Baldwin, Vice-President  
Julie Corwin, Secretary & Vice President  
Amy Sutherland, Secretary  
Josh Weinstock, Treasurer  
Kevin Brown, Treasurer  
Lynn Gervens  
Réme Gold  
Bob Herman  
Lisa Kennedy  
Lisa Knebel  
Emily Newmann  
Tilla Rodemann  
Kris Sanders

## 2025 GAS KILN FIRING TEAM

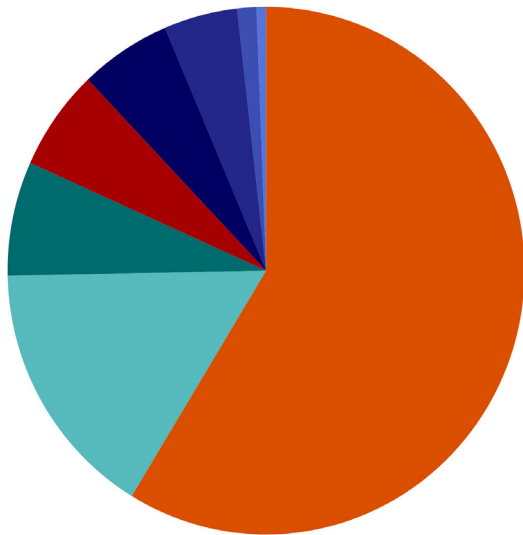
Maddie Ball  
Kevin Brown  
Charlotte Cooper  
Alejandra Cuadra  
Melody Eimer  
Sanem Gray  
Doug Hansel  
Toni Langerman  
Deb Minns  
Bill Russell  
Michael Scanlon  
Judy Segal  
Ki Wan Sim  
Jessica Suarez  
Naomi Zarilli

For list of Faculty see page 15

# FINANCE

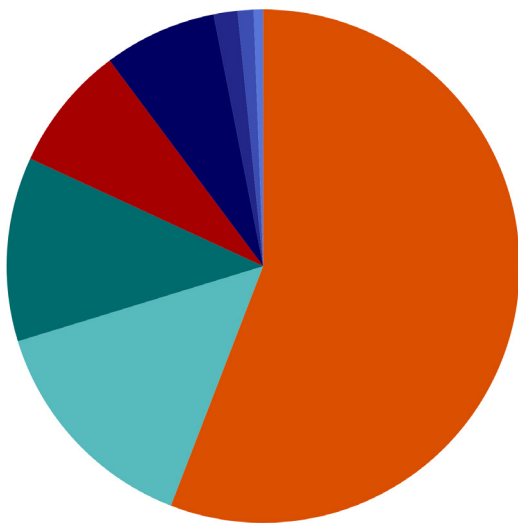
## INCOME AND EXPENSES FOR 2025

**INCOME: \$1,708,099**



- 58% Class Tuition, Program Support and Membership
- 16% Pottery Sales & Gallery
- 7% Studio Fees
- 6% Investment Income
- 6% Fundraising Events & Donations
- 4% Clay Sales, Tool Sales & Firing Fees
- 2% Grants
- 1% Other

**EXPENSES: \$1,498,987**



- 56% Staff & Faculty
- 14% Facility
- 11% Pottery Sales & Gallery
- 8% Capital Improvements
- 7% Program Services
- 2% Other
- 1% Consultants
- 1% Fundraising & Publicity



## FROM STUDENT TO SUSTAINER: AMY'S STORY

*I haven't missed a class at Mudflat since 2012, not even during the pandemic. This is where I find and express my creative voice. This is also where I find a rich community of like-minded spirits who can discuss world events and cooking as easily as slip and underglaze. Yeah, I'm the one who talks a lot to people in the glaze room!*

*Mudflat has given me so much, I want to give back, to be a part of its ongoing success. That's why I signed on for the new monthly giving program, a super easy and affordable way to donate. Even a \$10 or \$20 monthly gift adds up and supports all the studio's fantastic work, now and in the future.*

--Amy Sutherland

Mudflat student & new board member

Above: Amy Sutherland

Back cover, clockwise: Glowing kiln, staff outing with baby goats, new classroom wheels, Tuttle & Tuds, student sculptures

# DONORS

## INDIVIDUAL DONORS

Nancy Aleo  
Linda Arbuckle  
Noni Armony  
Jill Arnow  
Aaron & Debra Askanase  
Mary Barringer  
Gail Barry  
Seddon Beaty  
Susan Bernstein  
Taryn Bone  
Darrah Bowden  
Michael Brailove  
Kevin Brown  
Kristina Busa  
Catherine Byrne  
Lee Campbell  
Lynn Cannici  
Gretchen Carter  
Betsy Chabot & Doug Manley  
Laura Chan & Tim Johnson  
Kent Christman  
Alaine Coffey  
Julie Corwin  
Genevieve Coyle  
Ken & Nancy Crasco  
Angela Cunningham  
Jen DeAngelis  
Charles Dietrick  
Catherine Doherty  
Yasuko Dower  
Holly duRivage  
Janine Fay  
Carole Ann Fer & Ellen Wieske  
Gabrielle Fougere & Jeff Dodds  
Merrill Frank  
Arthur Freierman  
Shelly Freierman  
Freud-Willis Family Fund  
Jen Fuchel  
Lynn Gervens & Richard Freierman  
Paul Glenn  
Reme Gold  
Halley Goldman

Ruth Goldsmith  
Kent Greenawalt  
Alice Grossman  
Doug Hansel  
Elise Hauenstein & Norm Abram  
Bob Herman  
Johanna Hill  
Kathy Hurxthal  
Liz Hyde  
Katherine Kamm  
Lisa Kennedy & Paul Spielman  
Gretchen Keyworth  
Lisa Knebel  
Kate Kuligowski  
Toni Langerman & Steve Krausman  
Mary Langevin  
Chiyoko Lee  
Debra Levy  
Janna Longacre  
Ruchika Madan  
Tess Mattern  
Pamela Matz & Norm Rubin  
Valerie Mayo  
Deborah McCarthy  
Katherine McKie  
Kathy McNeill  
Maureen Mills & Steven Zoldak  
Deborah & Richard Minns  
Marilyn Minns  
Jen Minotti  
Lucia & John Mudd  
Emily Newmann  
Beatrice Oakley  
Celine Oringer  
Bonnie Payne & Roger Tobin  
Bernie & Sue Pucker  
Sasha Raiz  
Tracy Raymond  
Joan Resnikoff  
Tilla Rodemann  
Henry Roth  
Betsy Rudnick & Bruce Posner  
Paul Salinas  
Kris Sanders

Michael Scanlon  
Susan & Stephen Schmidt  
Cynthia Schorr  
Ellen Schorr  
Harvey Schorr  
Judith Segal & James Kelley  
Janine Senatore  
Dan & Laura Shaw  
Jodie Siegel  
Lynne Simon-Marden  
Charles Stahl  
Elizabeth Stahl  
Jane Stolzman  
Suzanne Stumpf & Daniel Ryan  
Amy Sullivan  
Michaela Sullivan  
Amy Sutherland  
Hannah Tran  
Corinna Tuckey  
Moriah Tumbleson-Shaw  
Jim Turnbull  
Barbara Wallace  
Ray Warburton  
Pamela Wickham  
Gerry Wolf  
Helen Wright  
Priscilla Yip

## INKIND DONATIONS

Susan Boyle  
George Boutros  
Lynn Cannici  
Angeline Cortes  
Nancy Edwards  
Janine Fay  
Gabrielle Fougere  
Merrill Frank  
Lynn Gervens  
Reme Gold  
Harvard Ceramics  
Dianne Henning  
Bob Herman  
Elizabeth Hope  
Lia Luus  
Laurie Mass

Dave Purpura  
Tracy Raymond  
Tom Robinson  
Hilary Rodgers  
Bill Russell  
Michael Scanlon  
Ulrike Trendelenberg  
Jill Tyzack  
Sarah Wachter

## VOLUNTEERS

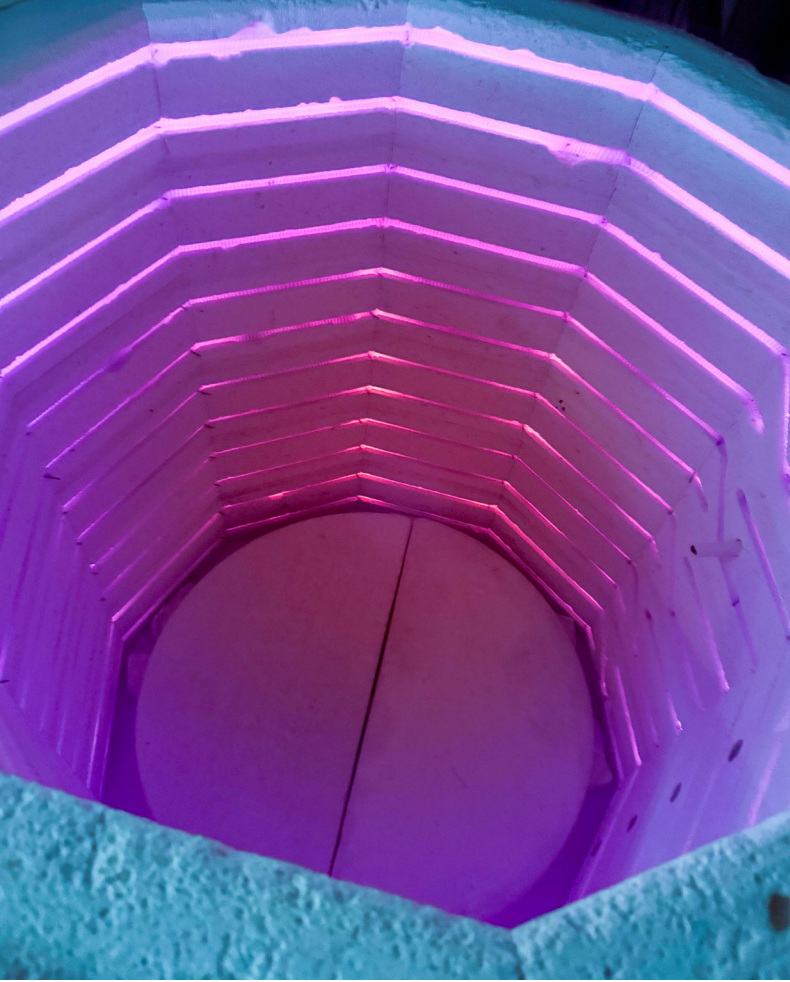
Kimberly Andresen  
Kevin Brown  
Julie Corwin  
Alejandra Cuadra  
Merrill Frank  
Reme Gold  
Bob Herman  
Denise LeBlanc  
Eliane Medina  
Emily Newmann  
Tilla Rodemann  
Michael Scanlon

## FOUNDATIONS

Biogen  
Liberty Mutual  
Paypal Giving Fund  
Franz W Sichel Foundation

## GOVERNMENT

City of Somerville  
Massachusetts Cultural Council  
Somerville Arts Council



MUDFLAT STUDIO  
81 BROADWAY  
SOMERVILLE, MA 02145  
WWW.MUDFLAT.ORG  
@MUDFLAT\_STUDIOS

