



# MUDFLAT STUDIO

Annual Report 2020

**MUD  
FLAT  
STUDIO**

CREATIVITY CLAY COMMUNITY  
**49**  
YEARS 1971-2020



# TABLE OF CONTENTS

## 4 INTRODUCTION

Director's Note  
About Mudflat Studio  
Mission  
Vision  
History: 1970  
Envisioning Mudflat's Future

## 8 STUDIO LIFE

Course Offerings  
2020 Enrollment  
Facility  
Faculty  
Faculty Spotlight  
Scholarships  
Workshops  
Studio Artists  
Studio Artist Spotlight  
Talks & Zooms  
Technical Education  
Soda Firing

## 18 OUTREACH & COMMUNITY

Community Outreach Report  
Outreach Programming  
2020 Outreach  
2020 At-a-Glance  
Online Gallery Shop  
Gallery  
2020 Events

## 22 ARTIST IN RESIDENCE

Residency Overview  
Mudflat AIRs  
2020/21 AIR Profile

## 24 STAFF & BOARD

## 25 FINANCE

Treasurer's Report

## 26 DONORS

Thank you!

# INTRODUCTION

## DIRECTOR'S NOTE

In all of Mudflat's 49 years as a nonprofit arts organization, we have never had a year like 2020, and I'm sure you haven't either! But one thing that has been very clear to us through all this – our community of students, artists, faculty, and staff is what makes Mudflat the vibrant and creative place that it is every day. We found new ways to stay connected and up-to-date, and launched new opportunities and programs to share our passion for clay.

The loss of our entire Spring/Summer semester was not only a significant financial hit to our budget but also a blow to what Mudflat is for all of our community members. The shutdown kept our doors closed from March 14 through June but that didn't stop us from connecting to one another via newsletters and memos, weekly staff meetings, and frequent board meetings. We offered virtual claymaking workshops and social Zooms. We figured out how to offer contactless curbside clay and tool sales and greenware drop-offs, and in July students were able to come in to glaze their work, with new limits on capacity and scheduling, and new cleaning and sanitizing protocols. We offered limited programming in August for affiliated, independent study and access options; and our fall semester was redesigned to be two 7-week long sessions, with a smaller number of classes, smaller number of students in each class, and limited open lab hours. In the fall we debuted our new online gallery site, featuring a new theme each month. Through all of this, health and safety concerns were of the utmost importance for all of our community members. Operating at about 40% of capacity allowed us to comply with new state and city COVID rules and to maintain an environment that is safe for all users.

Needless to say, everything we had planned for 2020 was canceled, including 2 open studio sales, exhibitions each semester, visiting artist workshops and Tuttle Talks, all children's programming, and

fundraising events. Mudflat Gallery was completely closed for 4 months; and continues to operate on a much reduced schedule.

One of my focuses this past fall has centered on advocacy work for arts & culture organizations and individual artists working in Somerville, as well as work with MassCreative for state issues and Americans for the Arts on a national level. There were two virtual Town Halls with Mayor Curtatone that resulted in \$500,000 in new grant funds in 2020 and the start of work for a new Cultural Strategic Plan for Somerville.

I also spent a fair amount of time this year learning about financial scenario planning, and then putting it into practice over and over again as our income/expense picture continually changed due to COVID restrictions. Mudflat was fortunate to receive a PPP loan, as well as grants from the Massachusetts Cultural Council, the Somerville Arts Council, the City of Somerville, and Winter Hill Bank. I want to especially thank our individual and foundation donors. Your generous support has meant a great deal to us as we struggled with our grim financial outlook this year. It has allowed us to maintain our facility, employ our studio staff, and keep our community intact. Thank you!

The Mudflat Board of Directors has provided strong support and guidance throughout this year. Our staff has continued to work through all of the challenges in generous and caring ways — it has been so valuable to be able to count on our team to work together for this organization. And thank you for the part each of you has played — as a student, as an artist, as a contributor - in our successes this past year. We count on your continued support and involvement in the Mudflat community.

**Lynn Gervens**

Executive Director



## ABOUT MUDFLAT STUDIO

Mudflat is a non-profit organization in Somerville, Massachusetts, offering classes, workshops, community programming, and events focusing on the ceramic arts. We foster an environment where students and artists can be creative, receive a rich and varied educational experience, and participate in a larger artistic community. Our goals are to share our passion for working with clay and to encourage our students to discover ways to express themselves with this responsive material, while creating functional, sculptural, and decorative work. Our strengths are that we focus on a single medium, we offer learning opportunities to all ages, and our students work in close proximity to professional studio artists. Mudflat is committed to maintaining an organizational culture of learning and respect, and a set of core values in all interactions among its students, faculty, studio artists, board, staff, funders, and neighbors. These interactions are welcoming, collaborative, collegial, supportive, and also fun!

A nonprofit, 501(c)3 organization, Mudflat is funded by tuition, studio fees, and donations from students, artists, and community members, as well as the Massachusetts Cultural Council, a state agency, and the Somerville Arts Council, a local agency supported by the Massachusetts Cultural Council. Mudflat also receives financial support from foundations, corporations, and individuals.

## MISSION

Mudflat has offered the metropolitan Boston community a unique opportunity for clay work and play since 1971. Our mission is to promote and expand appreciation of and participation in the ceramic arts through classes, workshops, outreach programming and events for students of all ages, abilities, and socioeconomic backgrounds. Mudflat also provides a mix of studio rentals, which attract and support 38 accomplished clay artists. Together, the school and studio form a dynamic community centered on clay and a shared creative process

## VISION

Founded 50 years ago, Mudflat will grow into the future by:

- Offering a breadth and depth of high quality programs that improve the technical and creative skills of students of all ages and abilities and promote excellence in the ceramic arts.
- Providing studio arrangements that encourage interactions and collaborations among ceramic artists.
- Being recognized nationally for serving our local community.
- Attracting national artists, teachers, and donors.
- Being a respected member of the national ceramics community.



**Above:** Clive Sithole AIR Exhibition

# HISTORY: 1970

There are riots in the streets! Buildings are burning, stores are looted, military and police actions are questioned; some factions call themselves Patriots while others feel betrayed! Peace and Racial Justice are the rallying cry. The young women are wearing jeans, the young men, beards, and a pungent scent wafts around the crowds. The culture is changing, parents are preserving their cultural traditions and financial standing while their children seem to live in a different world. The young people reject industry and are creating in the crafts: fibers, clay, metal, and glass. One day our telephones were on “party lines,” — the next we had reached the moon and there was an ATM machine at the bank. What was going on in 1970?

The obvious answer is that the post-World War II generation was coming of age. Of this large generation, the white portion was broadly affluent and educated thanks to the benefits distributed to their parents, the returning white veterans. They enjoyed strong economic opportunities and support for their education through the “G.I. Bill,” — as well as easy mortgage terms in the suburbs. All of this allowed their children, the white generation coming of age, to develop in an atmosphere of strength, success and independence. The economy was expanding, education was very affordable and very liberal, and technology was changing daily. It was a very exciting time, if you were white. (Yes, I said that 4 times. It is not enough.)

In the local clay world we find a cluster of new organizations founded in the early 1970s: Mudflat in 1971; also the Harvard Ceramics program; Mudville; Clayground; Project Art; and Clay Dragon all in Cambridge. Many were associated with the women’s movement in the 1970s. The “Studio Potter Journal” was started by the New Hampshire Potter’s Guild in 1971. Many organizations in many disciplines were started in this time period — many strands were coming together!

By mid-century, the ceramic work of such artists as Peter Voulkos and Bruno LaVerdiere had left the world of usable vessels altogether; they were functioning as sculptors. Many potters who were still creating functional forms, such as Val Cushing, Betty Woodman, and Toshiko Takaezu, were clearly expressing a personal aesthetic without conforming to expected vessel forms or the practicalities of table ware. There was a strong line of succession from Bernard Leach that can be seen in the work of Byron Temple and many others; Paul Soldner was exploring the potential of Raku; and Paulus Berensohn was pinching his beautiful pots. At the time that Mudflat was established all these threads were weaving together to form the cultural tapestry of the late 20th century.

That is some of what was going on in 1970! There are so many ways in which it was a very different world, and yet it resonates today as we look back from a turbulent and changing place, full of restless energy, and social change.

**Michael Scanlon**

Mudflat Board of Directors

# ENVISIONING MUDFLAT'S FUTURE

On February 16, 2020 — just weeks before reality would be altered by the pandemic — the Mudflat board met in the multipurpose room for a Visioning Session, to engage in a day of big-picture thinking around the priorities and goals for advancing Mudflat's mission. At the time, we had no idea that it was the last chance for us to gather in-person before Zoom became our new meeting space! Neither did we realize just how much the world would change in the year ahead, and along with it Mudflat's priorities. However, much of the conversation centered around themes that would remain critical throughout 2020 — namely, diversity & inclusion, local/national/online reach, and creative development. All resonated throughout a year that came to be defined by the movement for racial justice, virtual connection, and a hunger for creativity as internal sustenance.

Our Visioning Session was facilitated by Erin Konkle, Director of Civic Engagement for Wellesley College. The board reflected on Mudflat's current state and opportunities for the future. We identified a series of goals and action steps that would allow us to build upon past successes and identify areas for growth. Our first goal emerged around Diversity, Equity, and Inclusion, to intentionally address DEI across all studio practices. Throughout 2020, this goal was advanced by our DEI committee, chaired by board member Sarah Chapman. For more information about these ongoing initiatives to make Mudflat a more inclusive space for all (or to join the committee!), please visit [mudflat.org/DEI](https://mudflat.org/DEI).

Further developing goals centered around the expansion of programming and access to the Somerville community, gallery enhancements, broadening national reach, and generating new opportunities for exposure to creative expression. This high-level perspective informed the board's work throughout 2020, despite the shifted focus to unpredictable closures, safety measures, and the financial health of the organization. Executive Director Lynn Gervens and the remarkable Mudflat staff navigated the impacts of the public health crisis on studio life, finding new ways to foster community both within the walls of 81 Broadway and virtually. At moments, the future seemed cloudy and the Visioning Session conversation felt light years away from our new reality. Yet now I look at it as a true gift that we came together just before the pandemic broke, grounding us in a shared vision and commitment to Mudflat's future.

## **Tess Mattern**

President, Mudflat Board of Directors



**Left:** Work in progress by a student

# STUDIO LIFE

## COURSE OFFERINGS

Mudflat offers an exceptional range of courses at all levels, including wheel-throwing, handbuilding, sculpture, and technical topics, during three semesters each year. Introductory courses are available every semester, along with a variety of special classes and workshops by resident instructors and guest artists. Our experienced faculty has a broad range of practical experience as well as formal training and education from ceramic arts programs at major universities.

In a typical year, our core education program would offer approximately 27 adult classes, 6 children's classes, and 40 workshops during each 14-week semester. Classes cover all aspects of ceramics, including beginning through advanced levels of wheel-throwing and handbuilding as well as surface decoration, skill building, and technical studies. As a complement to the core classes, seminar classes, private lessons, independent study options, and an adult summer semester are also available.

However, 2020 challenged us to find new ways to keep our community together and engage with our students. Over the summer months while our facility remained closed, we were able to offer options for working with clay, including curbside clay and tool sales for working at home, contactless greenware drop-off dates for work needing to be fired, and times to pick up finished fired work from the winter semester classes and workshops held before lockdown. Mudflat faculty shared clay projects and techniques through a video series of virtual workshops, covering topics ranging from handbuilding cups and plates to decoration tips. And we stayed connected to our students through a free series of social Zoom meetings, group chats that ranged from "Show us Your Mugs" to "Clay Catastrophes".

When we could begin to reopen in July, we scheduled a month of lab hour times for previous students to come in to glaze up their work. In August, we offered options for working at Mudflat, through Independent Study and August Access, as well as an Affiliated program for students to continue working at home. A new scheduling platform for students coming in for open lab hours allowed us to regulate the number of people in the building.

Our fall semester was modified to comply with new health and safety guidelines and a reduction of occupancy numbers. We offered two 7-week long sessions and were fully enrolled with over 150 students each session. And we almost made it to the end of the semester before having to close 2 days early due to increases in COVID cases and a rollback by the City of Somerville which shut down educational institutions again.



**Above:** Tuttle sanitizing station





## 1910 PARTICIPANTS

## 2020 ENROLLMENT

- 615** Adults enrolled in classes
- 140** Adults enrolled in workshops
- 805** Adults attending presentations
- 24** Children enrolled in classes
- 102** Parents & children enrolled in workshops
- 66** Adults & children participating in field trips
- 75** Adults & children participating in community programs

### COVID-19 REQUIRED THE ADDITION OF NEW OPTIONS:

- 128** Adults enrolled in virtual workshops
- 143** Adults participated in social Zooms
- 70** Adults participated in curbside clay sales
- 275** Adults registered for July glaze sessions



# FACILITY



Small Wheel Classroom



Handbuilding Classroom



Main Wheel Classroom



Kiln Room, Gas Kilns

## 2020 FACULTY

Noni Armony	Kate Kuligowski
Cary Atsalis	David LaPierre
Susan Bernstein	June Lee
Jennifer DeAngelis	Marc Mancuso
Gabrielle Fougère	Maureen Mills
Lynn Gervens	Steve Murphy
Leah Guerin	Julie Peck
Arthur Halvorsen	Tracy Raymond
G.V. Kelley	Clive Sithole
Lisa Knebel	

## 2020 COMMUNITY FACULTY

Susan Brooks	Deb Minns
Jeanne Garrison	Steve Murphy
Rebecca Gillette	Emily Newmann
Liz Hyde	Rick Shaffer
Lisa Knebel	Barbara Vail
Kate Kuligowski	Melody Wolfe
June Lee	

# FACULTY

The instructors at Mudflat represent a broad spectrum of ceramic artists and educators who bring a range of approaches and sensibilities to the educational experience at Mudflat. Short bios and photos of all current faculty members can be found on our website.



## TRACY RAYMOND

### FACULTY SPOTLIGHT

Tracy came to Mudflat in 2002 as a student and started teaching at Mudflat in 2004. Her previous ceramics experience included classes at local studios including BCAE, Harvard, and RISD.

During 2020, when the pandemic closed the studio mid-semester in March, many Mudflat instructors met virtually with their classes. Tracy continued to host virtual meetings for her interested intermediate wheel students, not only for the remaining few weeks of the Spring semester, but well into June. She describes those Zoom sessions as “part clay class and part social club with an element of mutual support thrown in.” She says, “The first class was a thorough, full-fledged demo, but it quickly became apparent that many of us were looking for other things more than we were looking for instruction in specific clay techniques at the moment.”

“It was really meaningful for me that this group of people wanted to continue to come together outside of formal classes during a time of stress and uncertainty. It speaks to the remarkable community that Mudflat is. There’s no question I got at least as much out of the pandemic classes as the students.”

**Above:** Faculty member, Tracy Raymond



# SCHOLARSHIPS

An important goal for Mudflat is to keep our tuition affordable. We provide financial support to our students through four scholarship funds, which are supported by generous contributions from individuals and by revenues from our Open Studio pottery raffles. One hundred percent of contributions to any of our scholarship funds provide direct financial support to students enrolled in Mudflat classes and workshops.

## JOHN MCCOOEY SCHOLARSHIP FUND

Partial scholarships for any adult class are available each semester to adult students needing financial assistance through the John McCooey Fund, established in 1998 in memory of this long-time Mudflat student.

## ELEE KOPLOW SCHOLARSHIP FUND

In 2004 Mudflat established a scholarship fund to benefit children and their families. The Elee Koplow Scholarship Fund, in memory of this long-time Mudflat artist and teacher, provides support for children, teen, and parent & child classes.

## ELLEN SCHORR SCHOLARSHIP FUND

With initial donations from her family and friends, a new scholarship fund was established in 2014 in memory of Mudflat founder Ellen Schorr. Scholarships will be awarded to adult students who are seriously pursuing education in the ceramic arts.

## JUDITH FUCHEL-MAHLER SCHOLARSHIP FUND

Our newest scholarship fund was established in 2016 by family members to honor Judith Fuchel-Mahler. Scholarships will be awarded to adult students who are studying handbuilding and sculpture in the ceramic arts.

## “EXCELLENCE IN CERAMICS” AWARD

Mudflat was pleased to present the 6th annual “Excellence in Ceramics” certificate and \$500 cash award to graduating Somerville High School student Bianca Oppedisano, in May 2020.



**Top:** Bianca Oppedisano **Bottom:** Sculptures by Bianca Oppedisano



# WORKSHOPS

## 2020 WORKSHOPS

In 2020, Mudflat hosted a variety of workshops, designed to expose students to a broad range of artists, styles, and techniques. These range from one-day introductory wheel sessions and “date night” workshops to weekend-long seminars with nationally known ceramic artists, and included new virtual workshops and social Zooms due to the COVID-19 pandemic.

- Visiting artist workshop with Clive Sithole
- Crystalline Glaze Firing workshop with David LaPierre and Marc Dobay
- Mosaic workshops with Gabrielle Fougère
- Parent and child handbuilding workshops with Kate Kuligowski
- Parent and child wheelthrowing workshops with Lisa Knebel
- February vacation week kids workshops with June Lee
- Adult introductory handbuilding workshops with Kate Kuligowski
- Adult introductory wheelthrowing workshops with Lisa Knebel
- Date Night workshops with June Lee and Rebecca Gillette
- Tool Time workshop series with Arthur Halvorsen and Lynn Gervens

## VIRTUAL WORKSHOPS:

- Building with Soft Slabs – Cup Edition!, Kate Kuligowski
- Handbuilding Plates at Home, June Lee
- Let’s Decorate – Underglaze Transfers, Arthur Halvorsen
- Hard Slab Construction: Boxes, Gabrielle Fougère
- Can You Handle It?, Kate Kuligowski with Cary Atsalis
- Drawing on Your Pots Using Inlay!, Leah Guerin
- Throwing a Covered Jar, Steve Murphy



Top to bottom: Clive Sithole, Steve Murphy on Zoom, Kate Kuligowski on Zoom

# STUDIO ARTISTS

Thirty-eight ceramic artists work in private or semi-private studios at Mudflat, producing a wide variety of functional and sculptural work. Some studio artists are former students, others are graduates of university degree programs specializing in ceramic arts. Most are full-time ceramic artists who exhibit and sell their work locally and nationally. Many have been awarded fellowships and residencies at renowned craft centers – including fellowship awards from the Somerville Arts Council, the Massachusetts Cultural Council, and the Boston Foundation's Brother Thomas Fund. The interactions between our artists and our students are an important asset and they offer sources of artistic and technical information, inspiration, and community.

Mudflat's studio artist program offers studio spaces at a range of prices for 2 artist categories: Resident Artists and Associate Artists.

Resident Artists are professional clay artists who have the technical skill and experience to fire their own work in the studio kilns.

Studios for Resident Artists are private individual spaces or shared studios with 1 or 2 other artists. Monthly rent ranges from \$250-\$380 per artist.

Associate Artists are serious clay students looking for more access, privacy, and shelf space. There are 2 large group studios of approximately 300 square feet, each shared by six artists. These studios are equipped with a shelving unit for each artist plus a central shared work table and shared pottery wheel in each studio room. Associate Artists' work is fired by Mudflat technicians. Monthly rent is \$244 per artist.

Both Resident Artists and Associate Artists have 24-hour studio availability, and use of other studio and classroom equipment. The monthly rent does not include clay materials, glazes, or firings, but these may be purchased through Mudflat for additional fees. A committee reviews all applications based on the following criteria: applicant's level of professionalism, artistic quality of work, and commitment to the Mudflat community.

## KURT KUSS (1961-2020)

The Mudflat community was sad to learn of Kurt's death from complications due to his diabetes. Kurt was a student at Mudflat since January 2000 and became a studio artist when Mudflat moved to the current building in 2011. He sold his functional pottery at both Mudflat Gallery and at our Open Studio sales, as well as at area craft shows.

Kurt worked tirelessly to advocate for people with disabilities. He was a strong resource for the Mudflat team during the planning of the current facility, suggesting ways to make things work better for all people. Kurt, along with his guide dog Baron and more recently Zoar, was a fixture behind the wine table at every open studio event at Mudflat. He enjoyed chatting with guests and providing a healthy pour of their beverage of choice. Kurt is missed by the entire Mudflat community.



## 2020 STUDIO ARTISTS

Noni Armony  
Kyriakos Atsalis  
Susan Bernstein  
Melissa Bland  
Lynn Cannici  
Sarah Chapman  
Angela Cunningham  
Holly Curcio  
Jennifer DeAngelis  
Debra Fleury  
Gabrielle Fougère  
Mariya Gazumyan  
Howard Gerstein  
Lynn Gervens  
Réme Gold  
Lisa Graf  
Tyson Graham  
Ellen Grund  
Katherine Hackl  
Arthur Halvorsen  
Doug Hansel

Elise Hauenstein  
Anne Hodgson  
G.V. Kelley  
Lisa Knebel  
Kurt Kuss  
Chiyoko Lee  
June Lee  
Chloe Marr-Fuller  
Trix Oakley  
Jane Proctor  
Tracy Raymond  
Elaine Reily  
Tilla Rodemann  
Melanie Salisbury  
Zach Shaw  
Clive Sithole  
Alice Templeton  
Kyla Toomey  
Corinna Tuckey  
Erik Wilson



***New artists in 2020:***  
*G.V. Kelley, Tyson Graham &  
June Lee*

## JUNE LEE

### STUDIO ARTIST SPOTLIGHT

"I was born in Hong Kong and moved to Boston when I was 17, where I was introduced to ceramics at Wellesley High School. Ever since then, clay has become an important part of my life. I became a Mudflat student in 2009, during my 20 years working in the corporate world. At Mudflat, I was reunited with my high school ceramics teacher, Howard Gerstein. During my decade at the studio, my teachers sparked in me the dream of becoming a full time clay artist and teacher, and I recognized that I love to share my passion in clay with others. In 2019, I finally left the corporate world, determined to devote my time to creating and teaching children clay as an after-school teacher. "

"In my work, I mainly use porcelain as the foundation of my pottery — it is the canvas for my imagination and creativity. I decorate my pots with cheerful nature scenes or cute animals to deliver a message of joy and happiness. 2020 was the toughest year of my life, and I am thankful to have clay therapy be an associate artist at Mudflat."

For more about June's story, and to see her work, visit [www.simplejourney365.com](http://www.simplejourney365.com).

**Above:** *Plates by June Lee*

# TALKS & ZOOMS

## TUTTLE TALKS:

Mudflat hosts "Tuttle Talks" each semester. In 2020 these free Friday evening presentations included:

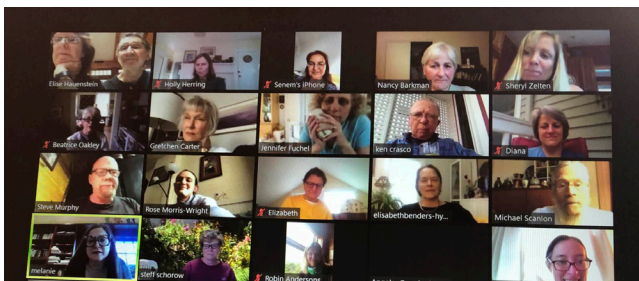
- Haystack Mountain School of Crafts, Carole Ann Fer & Ellen Wieske
- Watershed Center for the Ceramic Arts, Chris Gustin
- Angela Cunningham

## VIRTUAL TALKS:

- G.V. Kelley, AIR

## SOCIAL ZOOMS:

- Mudflat Social Hour, hosted by Tess Mattern
- Share Something Creative, hosted by Elizabeth Baldwin
- Show Us Your Mugs, hosted by Lynn Gervens
- Interview with Clive Sithole, hosted by Lynn Gervens
- How Did You Start Working in Clay?, hosted by Tess Mattern
- Share Your Favorite Books, hosted by Angie Cunningham
- Share Your Clay Catastrophes, hosted by Elizabeth Baldwin
- Good-bye to Clive Sithole, hosted by Susan Bernstein



# TECHNICAL EDUCATION

For students who have the time and desire to increase their knowledge and experience, Mudflat offers a one-year intensive technical education program. Students can learn the technical side of ceramics, including clay and glaze chemistry, kiln work, and studio maintenance, while deepening their relationship with the studio. Graduates of the program are eligible to join Mudflat's technical team. Our 2020 tech ed students were Celine Bailly, Rick Shaffer, and Hugh Wilburn.

**Top:** Screen shot from a Mudflat social Zoom call **Bottom:** Cary Atsalis showing off the gas kiln



# SODA FIRING



**Clockwise from Top Left:** Before firing, after firing, Cary Atsalis & Mike Roche spraying soda, work from the soda kiln

# OUTREACH & COMMUNITY

## COMMUNITY OUTREACH REPORT

Art — and in particular public art — can be a lifeline. It unites us with our humanity. In these dark and difficult times of COVID, we still can look around Greater Boston at the various sculptures and murals to experience vibrant joy, intrigue, and connection with others. That experience is why Mudflat's community outreach programming pivoted into public art for 2020.

In the previous year's report, I wrote of our commitment to equity and how we focus on building bridges with those who normally might not have the opportunity to access our programming. At the beginning of 2020, we were right on track with that objective. Just in January and February alone, we ran workshops with 6 different community organizations in which the participants made individual take-home pieces.

We also were looking forward to a new relationship with the Boston Firefighters Burn Foundation. We were to host workshops for young burn victims together with firefighters. The program coordinator found that Mudflat could provide a safe space for these children to create with clay and laugh with the firefighters. Then COVID shut everything down. All programming was cancelled.

However, something interesting happened...I continued to check in with our partners to help with aid services and offer words of support and comfort. At first, these agencies spoke of how all their resources were directed to meeting dire need. Then, after a few months, they started to tell me about how much their clients miss art engagement. They asked that Mudflat bring ceramics back into their lives. And so in the quiet of COVID, we thought about how to restructure our programming for living in a pandemic. We pulled back the lens to see how to leverage all that we are at Mudflat to best suit emerging needs and interests of our larger community. We considered various ideas such as virtual workshops with DIY clay, art kits to be

delivered, outdoor socially-distanced workshops. Alas, these ideas work great for some but not for all.

We returned to Mudflat's mission and challenged ourselves to take an expansive view of community outreach. Guided by our commitment to equity, we drilled down into the question of how ceramics can support underserved constituencies. And that's when we realized — public art.

So we got to work. In the fall of 2020, we built infrastructure for collaborative-made ceramic art that would create a sense of place and belonging. We figured out a way for these constituencies to produce public murals in which they could recognize themselves and reflect their connection to community.

For our first initiative, we joined forces with Teen Empowerment, Somerville's leading teen program, to create a multi-month project. We hired the artist teacher May Chau and figured out logistics and curriculum. We recruited 12 teens to design and create a 2-dimensional mural, depicting their vision of scenes in the community. We determined that the mural would go at the corner of Cross Street & Broadway in Somerville where the public passes to get to the park, the food pantry, and the community center.

Nonetheless, the challenges kept coming. Many of the teens didn't have stable or sufficient internet. They didn't have quiet spaces for Zoom. They didn't have large size paper to sketch out their tile ideas. November and December 2020 flew by as we worked to resolve issues. In January of 2021, we launched!

Now, I look forward to next year when I will report on how we implemented our plan of Zoom sessions, small COVID-safe in-person pods, and making the ceramic arts accessible to everyone.

**Jenny Dworkin**

Community Outreach Coordinator



# OUTREACH PROGRAMMING

Mudflat has a long history of special outreach programs and events that demonstrate our ongoing commitment to enhance and encourage the vital and creative development of ceramic arts in the greater Boston area.

## EDUCATIONAL PROGRAMS AT MUDFLAT

As a complement to our core program of classes and workshops, Mudflat offers opportunities for school, youth, and corporate groups to visit our facility for a hands-on experience working with clay. These classes and field trip visits are led by Mudflat faculty and incorporate age-appropriate clay working techniques in handbuilding and wheelthrowing skills. Participants create and decorate clay pieces; all work is fired in Mudflat kilns to produce a finished product. Typical programs include an ongoing weekly class for 4th to 6th graders from a neighborhood charter school, a weekly class for at-risk high school students, one-time field trips for Girl Scouts working towards a pottery merit badge, and corporate team-building workshops.

## EDUCATIONAL OFF-SITE PROGRAMS

Mudflat's instructors travel to local organizations and programs to bring clay-making to kids, teens, families, and seniors. These programs focus on handbuilding skills, using slabs and coils to create functional and sculptural pieces that are decorated with texture and underglaze colors. All work is brought back to Mudflat for firing in our kilns, and returned to the participants. Typical programs include one-time workshops at local preschools for 3-5 year olds, ongoing weekly afterschool classes at elementary schools, and monthly programs at senior centers.

## FUNDING

To ensure that Mudflat can provide opportunities to groups with limited financial resources and provide a valuable artistic experience for all ages, many of these programs are supported by contributions from individuals and foundations to Mudflat's Community Outreach Program Fund, and proceeds from Mudflat fundraising events. We also receive financial support for specific programs from the Somerville Arts Council, the Somerville School Department, and the Somerville Council on Aging.

## 2020 OUTREACH

- The Mystic Learning Center workshops for elementary students, teens, and families
- The Welcome Project workshop for immigrant families
- Teen Empowerment leadership group workshops
- Home Base veterans program workshops for families, women veterans, and couples
- Massachusetts Cultural Council's "EBT Card to Culture" reduced tuition program
- One-time field trip visits to Mudflat for private adult and children's birthday groups, Girl Scout troops, and a school group from The Children's Room
- Corporate team-building workshop for adult group from SQZ Biotech



*142 Outreach Program  
Participants in 2020*

# GALLERY

In 1998 Mudflat Gallery, a year-round retail store in Porter Square Cambridge, opened to showcase the work of Mudflat artists, faculty, and students. This 350 square foot space is in a glass arcade in the busy Porter Square shopping center, and is adjacent to another local craft co-op, Sign of the Dove.



# ONLINE GALLERY SHOP

In 2020, 40 Mudflat artists were represented at Mudflat Gallery. Due to COVID-19, the Gallery was closed for 4 months, allowing time for some overdue renovations and reorganization. The Gallery reopened on July 8 with limited hours and reduced customer capacity. To make shopping easier for our customers and to provide an additional sales outlet for our artists, we launched our Mudflat Gallery online shop in September - [mudflatgalleryshop.square.site](https://mudflatgalleryshop.square.site) – featuring monthly themed shows.



**Top:** Mudflat Gallery **Bottom left:** Plate by Jennifer DeAngelis **Bottom right:** Bowl by Doug Hansel



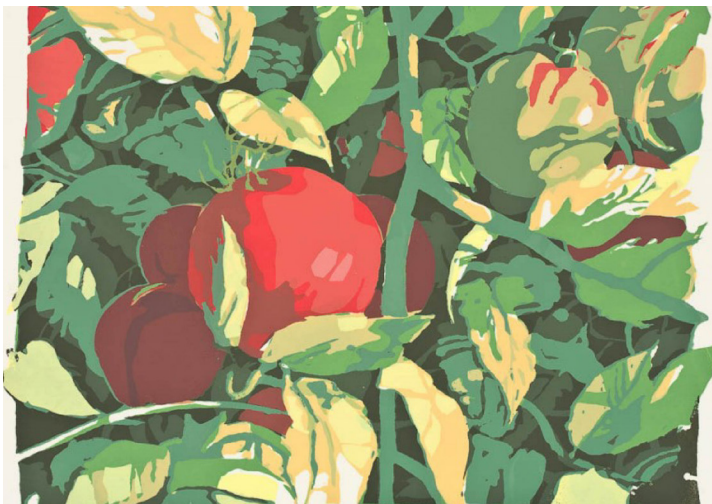
## 2020 EVENTS

### EXHIBITIONS:

- Clive Sithole, "Ukulanda Noku Ngenisa: Bringing in the Language of the Goddess"

### FUNDRAISERS:

- 2020 Mudflat t-shirt and hoodie sale
- Sale of donated silkscreen prints by Ray Warburton
- Pop up Cup sale



## 2020 AT-A-GLANCE

JANUARY	Winter semester began – fully enrolled
FEBRUARY	Clive Sithole AIR workshop, Board visioning session.
MARCH	Studio closed, Gallery closed, Staff home
APRIL	Received PPP loan
MAY	Staff returned to studio
JUNE	Curbside clay sales & greenware drop-off, social Zooms, virtual workshops
JULY	Virtual workshops, social Zooms, in-person glaze sessions, Gallery reopened
AUGUST	Students returned for Independent Study / August Access / Affiliated, Clive AIR exhibition
SEPTEMBER	Fall semester with 2 new 7-week sessions, online Gallery shop launched
OCTOBER	Received City of Somerville Arts COVID Relief grant & Winter Hill Bank grant
NOVEMBER	Second 7-week session begins
DECEMBER	Shutdown #2

**Top Right:** Print by Ray Warburton **Bottom Left:** Piece by Clive Sithole

# ARTIST IN RESIDENCE

## RESIDENCY OVERVIEW

In 1996 Mudflat began offering a one-year residency position to clay artists. This highly competitive program provides a private studio space at no cost with access to Mudflat's facility and opportunities for the resident to teach and sell their work. The position provides the artist with a stipend for materials, and, new in 2020, a monthly housing stipend. At the end of the residency year, Mudflat hosts a solo exhibition for the artist to showcase their work. While pursuing their artwork in a creatively and financially supportive environment, these artists also make significant contributions to Mudflat as teachers and mentors.



## MUDFLAT AIRS

<b>2020-2021</b>	G.V. Kelley
<b>2019-2020</b>	Clive Sithole
<b>2018-2019</b>	James Lee Webb
<b>2017-2018</b>	Katie Fee
<b>2016-2017</b>	Martin McDermott
<b>2015-2016</b>	Mike Roche
<b>2014-2015</b>	Rachel Eng
<b>2013-2014</b>	Kyla Toomey
<b>2012-2013</b>	Dan Molyneux
<b>2011-2012</b>	Holly Curcio
<b>2010-2011</b>	Lisa Graf
<b>2009-2010</b>	Debra Fleury
<b>2008-2009</b>	Deborah Schwartzkopf
<b>2007-2008</b>	Cathy Lu
<b>2006-2007</b>	Nicole Peters
<b>2005-2006</b>	Ryan Takaba
<b>2004-2005</b>	Angela Cunningham
<b>2003-2004</b>	Monica Ripley
<b>2002-2003</b>	Gabriel Penfield
<b>2001-2002</b>	Meghan Sullivan
<b>2000-2001</b>	Ruchika Madan
<b>1999-2000</b>	Karsten Kunert
<b>1998-1999</b>	Randy Fein
<b>1996-1997</b>	David Orser



**Above top:** G.V. Kelley **Bottom Left:** Piece by G.V. Kelley **Bottom Right:** G.V. working in their studio





## 2020/2021: G.V. KELLEY

### AIR SPOTLIGHT

G.V. Kelley is from the city of Hayward in the San Francisco Bay Area. In 2012 they completed their undergraduate degree from San Francisco State University, where they received dual baccalaureate degrees in Ceramics and Earth Science. After staying on at SFSU for three years as a studio assistant, G.V. moved to Gainesville, Florida, where they pursued post baccalaureate and graduate studies at the University of Florida in Ceramics. They received a Masters of Fine Art degree in the Summer of 2019.

G.V.'s non-binary gender identity inspires the deeper concepts behind their fantastical ceramic sculptures, coupled with a deep love of animals and natural sciences. They make figurative ceramic work that explores ideas about non-normative identities through the hybridized animal/human as metaphor, with references to fantasy and science fiction. Through chimera-like sculptures they develop their own personal mythology to challenge the boundaries of identity and place. The creatures are set in otherworldly landscapes, paralleling exploration of their non-normative identities.

Presently, G.V. is settling into their studio space at Mudflat Studios, where they are the long-term artist-in-residence for the 2020-21 year. In spite of the unprecedented nature of our current times, G.V. takes solace in the safety, comfort, and endless support of the vibrant Mudflat community. They are very excited to be at Mudflat, and are on their way to developing a new body of sculptural work pushing their concepts and technical skills in brand new directions.

**Above:** Piece by G.V. Kelley

ARTIST-IN-RESIDENCE | 23

# STAFF & BOARD

## 2020 STAFF

Lynn Gervens, Executive Director  
Kyriakos Atsalis, Technical Director  
Jennifer DeAngelis, Assistant Technical Director  
Gabrielle Fougère, Administrative Assistant  
Kate Kuligowski, Administrative Assistant  
Jessica Mitchell, Technical Assistant  
Kate Kuligowski, Technical Assistant  
Jenny Dworkin, Community Outreach  
Bill Russell, Facility Manager  
Jeff Dodds, Maintenance

## 2020 GALLERY STAFF

Elizabeth Baldwin  
Lila Freierman  
Lori Green  
Anne Hodgson  
Lisa Knebel  
Toni Langerman  
Stephanie Schorow  
Pamela Wickham

## 2020 MONITORS

Gail Barry  
John Duffy  
Sue Hamilton  
Lisa Kennedy  
Paul Salinas  
Stephanie Schorow

## 2020 BOARD OF DIRECTORS

Tess Mattern, President  
Elizabeth Baldwin, Vice-President  
Erik Wilson, Vice-President  
Stephanie Schorow, Secretary  
Josh Weinstock, Treasurer  
Sarah Chapman  
Angela Cunningham  
Lynn Gervens  
Réme Gold  
Katherine Hackl  
June Lee  
Lisa Knebel  
Laurie Rubin  
Michael Scanlon

## 2020 GAS KILN FIRING TEAM

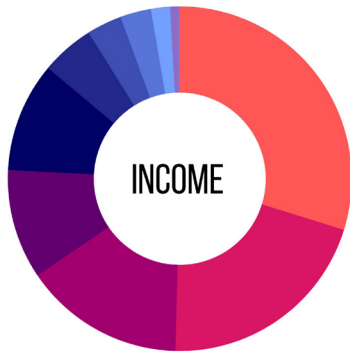
John Duffy  
Sue Hamilton  
Doug Hansel  
Josh Hill  
Toni Langerman  
Deb Minns  
Jessica Mitchell  
Rose Morris-Wright  
Bill Russell  
Melanie Salisbury  
Michael Scanlon  
Judy Segal  
Erik Wilson

*For list of Faculty see page 11*

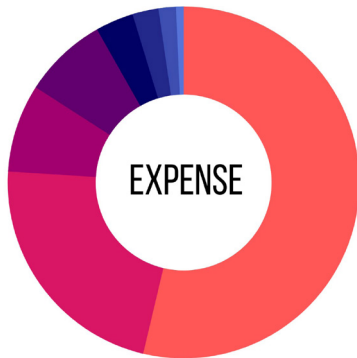


# FINANCE

## INCOME AND EXPENSES FOR 2020



- 30% Class Tuition, Program Support and Membership**
- 21% Fundraising Events & Donations**
- 15% Studio Fees**
- 10% Pottery Sales & Gallery**
- 10% PPP**
- 5% Clay Sales, Tools Sales, Firing Fees**
- 3% Facility Rental**
- 3% Grants**
- 2% Investment Income**
- 1% Other**



- 54% Staff & Faculty**
- 22% Facility**
- 8% Pottery Sales and Gallery**
- 7% Program Services**
- 4% Capital Improvements**
- 3% Consultants**
- 2% Other**
- 1% Fundraising and Publicity**

**JOSH WEINSTOCK**

**TREASURER'S REPORT**

Mudflat is happy to report that, despite the coronavirus pandemic, the organization continues to function on a sound financial footing. In 2020 Mudflat had a total income of \$746,942 and expenses of \$768,106, representing a loss of \$21,164. Mudflat was able to secure an SBA PPP loan of \$76,777 in April (fully forgiven in November) as well as grants from the City of Somerville and Winter Hill Bank, that offset losses due to programming cancellations while allowing Mudflat to keep our studio staff fully employed. The distribution of income sources and our areas of expense are represented by the graphs here. These are based on figures that have been submitted to our auditors for final review. More detailed information is available on request.

# DONORS

## INDIVIDUAL DONORS

Kimberly Adami  
Janet Adelberg  
Meredith Affleck  
Nancy Aleo  
Anonymous (2)  
Noni Armony  
Aliza Arzt  
Debra Askanase  
Kathy Augenblick  
Nancy & David Barkman  
Jan Barlow  
Mary Barringer  
Diane Bazner  
Cassandra Bearce  
Seddon Beaty  
Claudette Beit-Aharon  
Elizabeth Benders-Hyde  
Susan Bernstein  
Petra Biemans-Rinsma  
Lois Biener  
Pierre Billon  
Pamela Bittersdorf  
Rev. Dr. Katherine C. Black  
Charitable Fund  
Bloom-Frankel Family Fund  
Anna Borodovsky  
Boston Kilns Sales & Service  
Laura Brewer  
Brody Family Charitable  
Fund  
Susan Brooks  
Broun Family Fund  
Kevin Brown  
Elisabeth Brown  
Megan Burns  
Catherine Byrne  
Lynn Cannici  
Joan Garcia  
Elizabeth Chabot  
Laura Chan  
Michelle Chan  
Dena Cherenson  
Kent Christman  
Lai Chu

Amy Cook-Wright  
Louise Cort  
Angeline Cortes  
Julie Corwin  
Joseph T. and Genevieve S.  
Coyle Charitable Trust  
Ken Crasco  
James Crowley  
Angela Cunningham  
Rita Daly  
Letitia Davis  
Jennifer DeAngelis  
Daniel & Pam DeAngelis  
Giuliana Di Mambro  
Teresa Doyle  
Dragonnorth Group  
John Duffy  
Holly duRivage  
Eamon Wick Trust  
Alison Ellis  
Emsbo Mattingly Family  
Fund  
Janine Fay  
Carole Ann Fer  
Luisa Field  
Daniel Fithian  
Gabrielle Fougère  
Merrill Frank  
Freud-Willis Family Fund  
Mary Gallagher  
Jeanne Garrison  
Lynn Gervens & Richard  
Freierman  
Carol Glover  
Réme Gold  
Lauren Goldberg  
Ruth Goldsmith  
Ruth E. Goldsmith  
Charitable Fund  
Amy Goldstein  
Stephen Goss  
David Groff  
Leah Guerin  
Sonia Guterman  
Katherine Hackl  
Cathe Hagerman Beizer

Sue Hamilton  
Francoise Han  
Doug Hansel  
Yue Hao  
Elise Hauenstein & Norm  
Abram  
Emma Hess & friends  
Teri Higgins  
Noel Hill  
Johanna Hill  
Harriet Hofheinz  
Katherine Hurxthal  
Meri Jenkins  
Lisa Kennedy  
Gretchen Keyworth  
Marcela Klicova  
Lisa Knebel  
Florence Koplow  
Beatriz Kuligowski  
Kate Kuligowski & John  
Reilly  
Toni Langerman  
Nancy Lawrence  
Chiyoko Lee  
June Lee  
Sang-Jeong Lee-Min  
Frances Leung  
Suzana Lisanti  
Emily Lober  
Nancy Lorenz  
Lowy-Zigman Family Fund  
Ellen Lubell  
Lia Luus  
Nancy Mahan  
Lois & Jim Manning  
Chloe Marr-Fuller  
Stephen Marshilok  
Kathryn Mattern  
Tess Mattern  
Pam Matz & Norm Rubin  
Valerie Mayo  
Alicia McCabe  
Deb McCarthy  
McGirr/Carlson Fund  
Kathy McNeill  
Elaine Mei

Deb Minns  
Jennifer Minotti  
Kathy Modigliani  
Sarah Morris  
Charlotte Morris-Wright  
David Moulton  
John & Lucia Mudd  
Carolyn Mugar  
Rebecca Munn  
Steven Murphy  
Emily Newmann  
Newmann Darrah Family  
Charitable Fund  
Alan Nissenbaum  
Ketty Noonan  
North End Muscular  
Therapy  
Trix Oakley  
Marie O'Brien  
Sarah O'Connor  
Lorraine Ott  
Bonnie Payne & Roger  
Tobin  
Nancy Phillips  
Ariel Plotkin  
Meredith Porter  
Maria Posa  
Bruce Posner & Betsy  
Rudnick  
Pucker Family Fund  
Sasha Raiz  
Tracy Raymond  
Erin Reilly  
Joan Resnikoff  
Barbara Reville  
Nancy Rhoads  
Monica Ripley  
Robin M. Anderson Designs  
Michael Rogan  
Jessie Rogers  
Henry Roth  
Marjorie Rothschild  
William Russell  
Daniel Rust  
Ann Ryan  
Peggy Sacco

Paul Salinas  
Melanie Salisbury  
Allison Savage  
Michael Scanlon  
John Schaeck  
Susan & Stephen Schmidt  
Laura Schofield  
Ellen Schöon  
Stephanie Schorow  
Cynthia Schorr  
Ellen Schorr  
Harvey Schorr  
Judith Segal  
Zachary Shaw  
Jodie Siegel  
Laurie Sigmund  
Melinda Smith  
Elizabeth Stahl  
Cicely Stetson  
Jane Stolzman  
Thomas Strus Trust  
Suzanne Stumpf  
Amy Sullivan  
Michaela Sullivan  
Amy Sutherland  
Alice Templeton  
Andrews Tolman  
Laura Tomlins  
Lauri Tomlins  
Anne-Ulrike  
Trendelenberg  
Corinna Tuckey  
Morgan Tuff  
Moriah Tumbleson-Shaw  
Marsha Turin  
James Turnbull  
Jill Tyzack  
Joanne Valeriani  
Sarah Wainwright  
Barbara Wallace  
Walter & Sue Stafford Gift  
Fund  
Ray Warburton  
Ellen Weinberg  
Weinrib-Weiss Fund  
Josh Weinstock

## INDIVIDUAL DONORS ( CONT)

Pam Wickham  
Maggie Wildnauer  
Lelah Willoughby  
Erik Wilson  
Gerald H. Wolf Gift Fund  
Susan Wolf  
Bob Wolff  
Karen Wong  
Karen Zaharee  
Jackie Zajac  
Julia Zell

## INKIND DONATIONS

Lisa Brugnoli  
Janine Fay  
Gabrielle Fougère  
Richard Freierman  
Elissa Freud  
Lynn Gervens  
Sue & Billy Hamilton  
Kate Kuligowski  
Tilla Rodemann  
Bill Russell  
Melanie Salisbury  
Harvey Schorr  
Judy Segal  
Anne-Ulrike Trendelenberg  
Cory Tuckey  
Ray Warburton  
Elaine Yoneoko

## FOUNDATIONS

Amazon Smile  
America's Charities  
Boger Family Foundation  
Bright Funds  
Network for Good  
Paypal Giving Fund  
Franz W. Sichel Foundation

## GOVERNMENT

City of Somerville  
East Somerville Main Streets  
Massachusetts Cultural Council  
Somerville Arts Council  
Somerville Public School Department



# THANK YOU!

*Mudflat is so very grateful for the generous contributions received from a record number of donors in 2020. THANK YOU! Your responses to our “Giving Tuesday – 24 Hours of Gratitude” online appeal in May, our 2020 Mudflat t-shirt and hoodie sale in October, and our Annual Appeal and “Text2Give” campaigns in November/December were so appreciated and were critical to Mudflat’s ability to keep going during this difficult year. Thank you for your support and for being part of the Mudflat community!*

Left: Piece by Gabrielle Fougère



MUDFLAT STUDIO  
81 BROADWAY  
SOMERVILLE, MA 02145  
WWW.MUDFLAT.ORG  
@MUDFLAT\_STUDIOS

